

BEHAVIORAL HEALTH ADVISORY BOARD
Disparities Reduction Committee Meeting
Tuesday, April 12, 2022, 4:30 – 5:30 PM
VIRTUAL MEETING VIA ZOOM

Zoom Participation

The following information referenced below and at the end of the agenda is provided to you in support of your attending the upcoming BHAB General Meeting via Zoom:

Join the Zoom meeting in the following way:

Join Zoom Meeting: <https://us06web.zoom.us/j/85994426151?pwd=T2NZNnRPZEpzTVdYSFZVSTFDeXAvZz09>

Meeting ID: 859 9442 6151

Password: 801048

Dial-In: 669-900-6833

AGENDA

- I. Call to Order
- II. Board Member Roll Call
- III. Welcome and Introductions
- IV. Approval of the Agenda – **ACTION** (Roll Call)
- V. Public Comments (3 min. per speaker)
- VI. Chair Comments (10 min.)
- VII. Presentation: Disparities in Ventura County – Cynthia Salas, Equity Services Manager – Office of Health Equity and Cultural Diversity (15 min.)
- VIII. New Business
 - A. Discuss the Committee’s Strategic Objectives and Next Steps
 - B. Discuss Future Presentations
 - C. Discuss Meeting Frequency
- IX. Adjourn

Next Meeting: Tuesday, May 10, 2022

Zoom Participation Information - continued

Please note the following important information related to supporting your participation in the upcoming meeting:

1. The meeting will be recorded.
2. All participants are muted upon entry to minimize any unintended disruption of background sounds.
3. Zoom will initially start with a “**waiting room**” at the start of the meeting, you will be “admitted” into the waiting room.

Public comments on agenda items can be made prior to or during consideration of agenda items and are limited to 3 minutes per speaker. Public comment periods are limited to no more than (20) minutes total for all speakers. In compliance with the Americans with Disabilities Act, if you need special assistance to participate in this meeting, please contact Behavioral Health Administration at (805) 981-6830. Reasonable advance notification of the need for accommodation prior to the meeting (48 hours advance notice is preferable) will enable us to make reasonable arrangements to ensure accessibility to this meeting.

4. Comments are taken in the order they are received in the queue/participant window. When it is your turn to make a comment, you will be asked to unmute yourself. **Public comments on agenda items can be made prior to or during consideration of agenda items and are limited to 3 minutes per speaker.** Public comment periods are limited to no more than (20) minutes total for all speakers. Comments can be shared in the following ways:
 - a. If you are joining the meeting via video/audio, you join the comment cue by clicking on the participant window at the bottom of the zoom screen and then click on the **“raise hand”** feature in that participant window.
 - b. If you are joining the meeting by telephone only, you join the comment cue by pressing ***9**.
5. Comments will be taken in the order they are received and are allotted 3 minutes. At the end of the three minutes, you will be notified that the time has ended, be able to make a closing comment and then the mic will be opened to the next person.



VENTURA COUNTY

BEHAVIORAL HEALTH

A Department of Ventura County Health Care Agency

Disparities in Ventura County

Disparidades en el Condado de Ventura

Cynthia Salas, Equity Services Manager
Office of Health Equity and Cultural Diversity –Ventura County Behavioral Health

Cynthia Salas, Gerente de Servicios de Equidad
Oficina de Equidad en Salud y Diversidad Cultural –Ventura County Behavioral Health

April 12, 2022

Terms and Definitions-Términos y Definiciones

Disparities

- The quantity that separates a group from a reference point on a particular measure of health that is expressed in terms of rate, proportion, mean, or some other quantitative measure. (HP2010)**

Social Determinants of Health

- Social determinants of health (SDOH) are the conditions in the environments where people are born, live, learn, work, play, worship, and age that affect a wide range of health, functioning, and quality-of-life outcomes and risks.*

Disparidades

- Cantidad que separa a un grupo de un punto de referencia sobre una medida particular de salud que se expresa en términos de tasa, proporción, media o alguna otra medida cuantitativa. (HP2010)**

Determinantes sociales de la salud

- Los determinantes sociales de la salud (SDOH) son las condiciones en los entornos donde las personas nacen, viven, aprenden, trabajan, juegan, adoración, y edad que afecta una amplia gama de resultados y riesgos de salud, funcionamiento y calidad de vida.*

Terms and Definitions-Términos y Definiciones

Health Disparities

Health Disparity Definition

- A health disparity (HD) is a health difference that adversely affects disadvantaged populations, based on one or more of the following health outcomes:
- Higher incidence and/or prevalence and earlier onset of disease
- Higher prevalence of risk factors, unhealthy behaviors, or clinical measures in the causal pathway of a disease outcome
- Higher rates of condition-specific symptoms, reduced global daily functioning, or self-reported health-related quality of life using standardized measures
- Premature and/or excessive mortality from diseases where population rates differ
- Greater global burden of disease using a standardized metric (NIH)**

Disparidades en la salud

Definición de la disparidad en la salud

- Una disparidad de salud (EH) es una diferencia de salud que afecta negativamente a las poblaciones desfavorecidas, basada en uno o más de los siguientes resultados de salud:
- Mayor incidencia y/o prevalencia y aparición más temprana de la enfermedad
- Mayor prevalencia de factores de riesgo, comportamientos poco saludables o medidas clínicas en la vía causal de un resultado de enfermedad
- Tasas más altas de síntomas específicos de la afección, reducción del funcionamiento diario mundial o calidad de vida relacionada con la salud autoinformada utilizando medidas estandarizadas
- Mortalidad prematura y / o excesiva por enfermedades donde las tasas de población difieren
- Mayor carga global de enfermedad utilizando una métrica estandarizada (NIH)**

Terms and Definitions-Términos y Definiciones

Social Determinants of Health Five Domains

Social determinants of health (SDOH) have a major impact on people's health, well-being, and quality of life. Examples of SDOH include:

- ❖ Safe housing, transportation, and neighborhoods
- ❖ Racism, discrimination, and violence
- ❖ Education, job opportunities, and income
- ❖ Access to nutritious foods and physical activity opportunities
- ❖ Polluted air and water
- ❖ Language and literacy skills



Social Determinants of Health
Healthy People 2030

Determinantes sociales de la salud Cinco dominios

Los determinantes sociales de la salud (SDOH) tienen un impacto importante en la salud, el bienestar y la calidad de vida de las personas. Ejemplos de SDOH incluyen:

- ❖ Vivienda segura, transporte y vecindarios
- ❖ Racismo, discriminación y violencia
- ❖ Educación, oportunidades de trabajo e ingresos
- ❖ Acceso a alimentos nutritivos y oportunidades de actividad física
- ❖ Aire y agua contaminados
- ❖ Habilidades lingüísticas y de alfabetización

Example/Ejemplo



- For example, African American/Black women and Latinas experience lower survival rates from triple-negative breast cancer than White women with the same disease—even with similar access to care, screening mammography, and insurance coverage—due to the lack of specialized screening and lack of viable treatment options available for this form of breast cancer.***
- Women from racial/ethnic minority populations in the United States present with a more advanced stage of breast cancer. **[The] study quantifies the extent to which insurance mediates this difference.**

- Por ejemplo, las mujeres y latinas afroamericanas/negras experimentan tasas de supervivencia más bajas de cáncer de mama triple negativo que las mujeres blancas con la misma enfermedad, incluso con un acceso similar a la atención, mamografía de detección y cobertura del seguro, debido a la falta de exámenes especializados y la falta de opciones de tratamiento viables disponibles para esta forma de cáncer de mama. * * *
- Las mujeres de poblaciones de minorías raciales / étnicas en los Estados Unidos se presentan con una etapa más avanzada de cáncer de mama. **[El] estudio cuantifica hasta qué punto el seguro media esta diferencia.**

SDOH CATEGORIES/SDOH Categorie

SDOH Categories



Housing



Health Literacy



Food



Financial Strain



Utilities



Transportation



Safety



Childcare



Employment



Health Insurance



Family &
Community Support

Ventura County Statistics- Estadísticas del Condado de Ventura

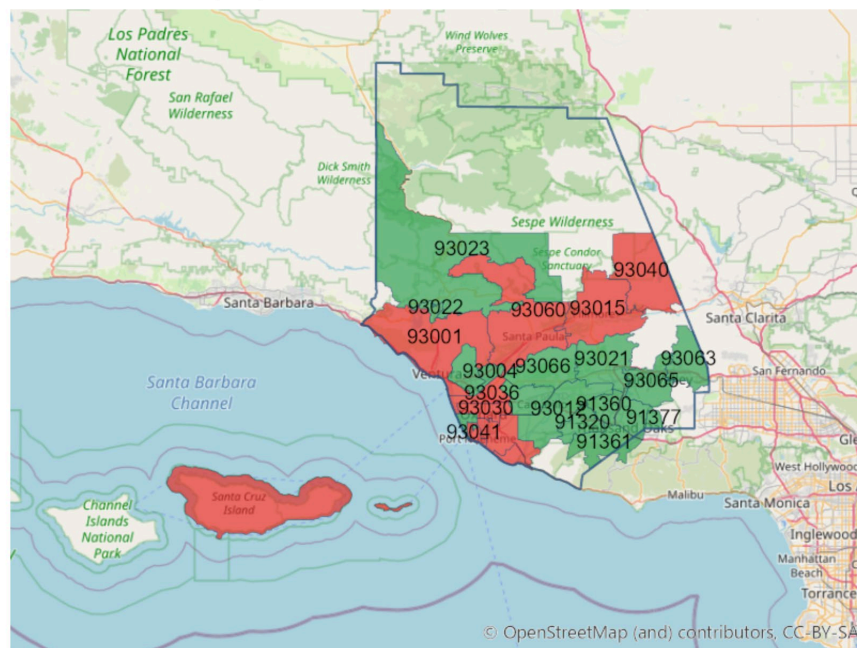
Social Determinants of Health



Social Determinants of Health
Copyright-free

Healthy People 2030

Comparison: Ventura, CA County Value
Measurement Period: 2015-2019
Data Source: American Community Survey



© OpenStreetMap (and) contributors, CC-BY-SA



< 8.9%



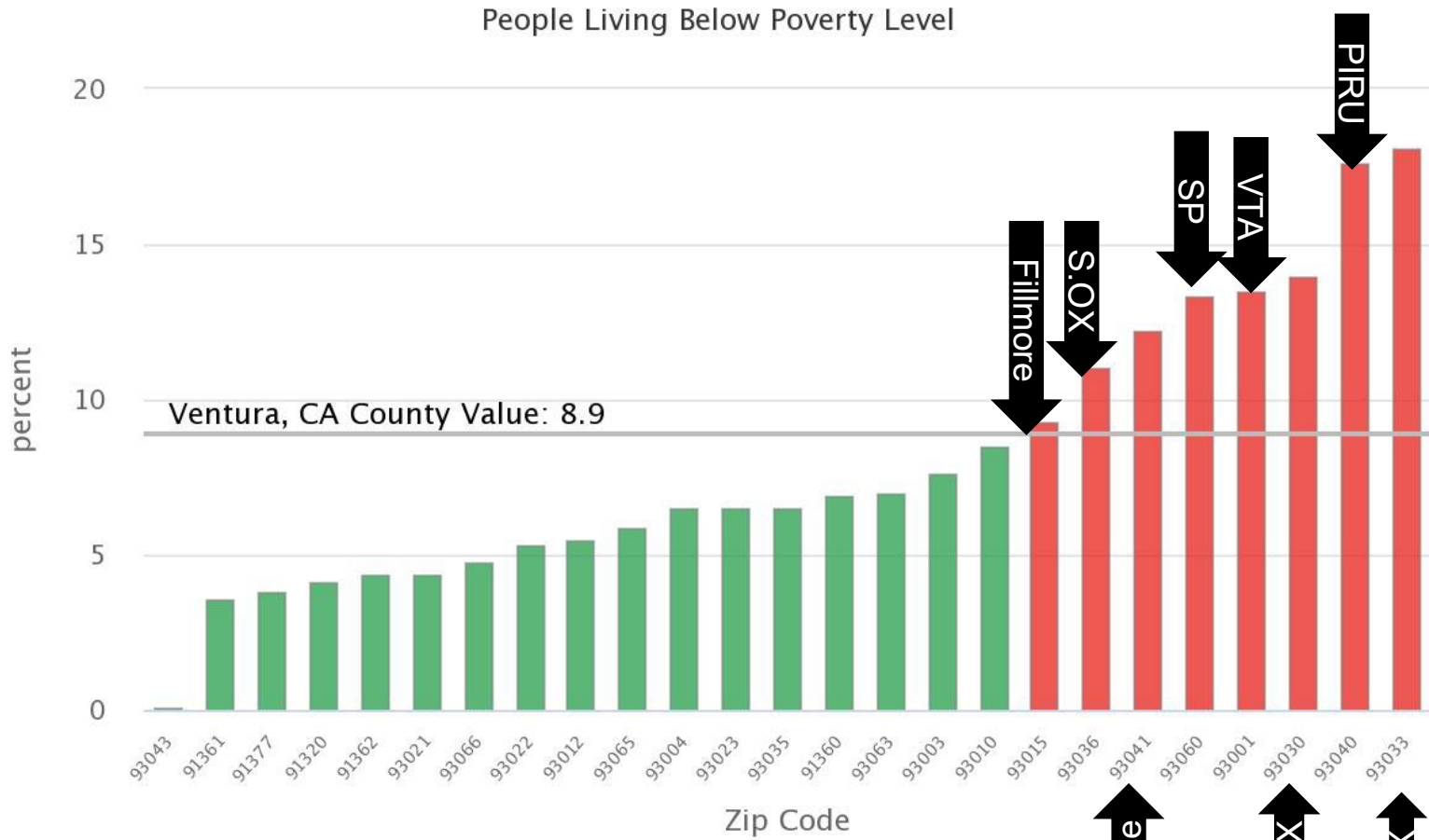
= 8.9%



> 8.9%

Ventura County Statistics-Estadísticas del Condado de Ventura

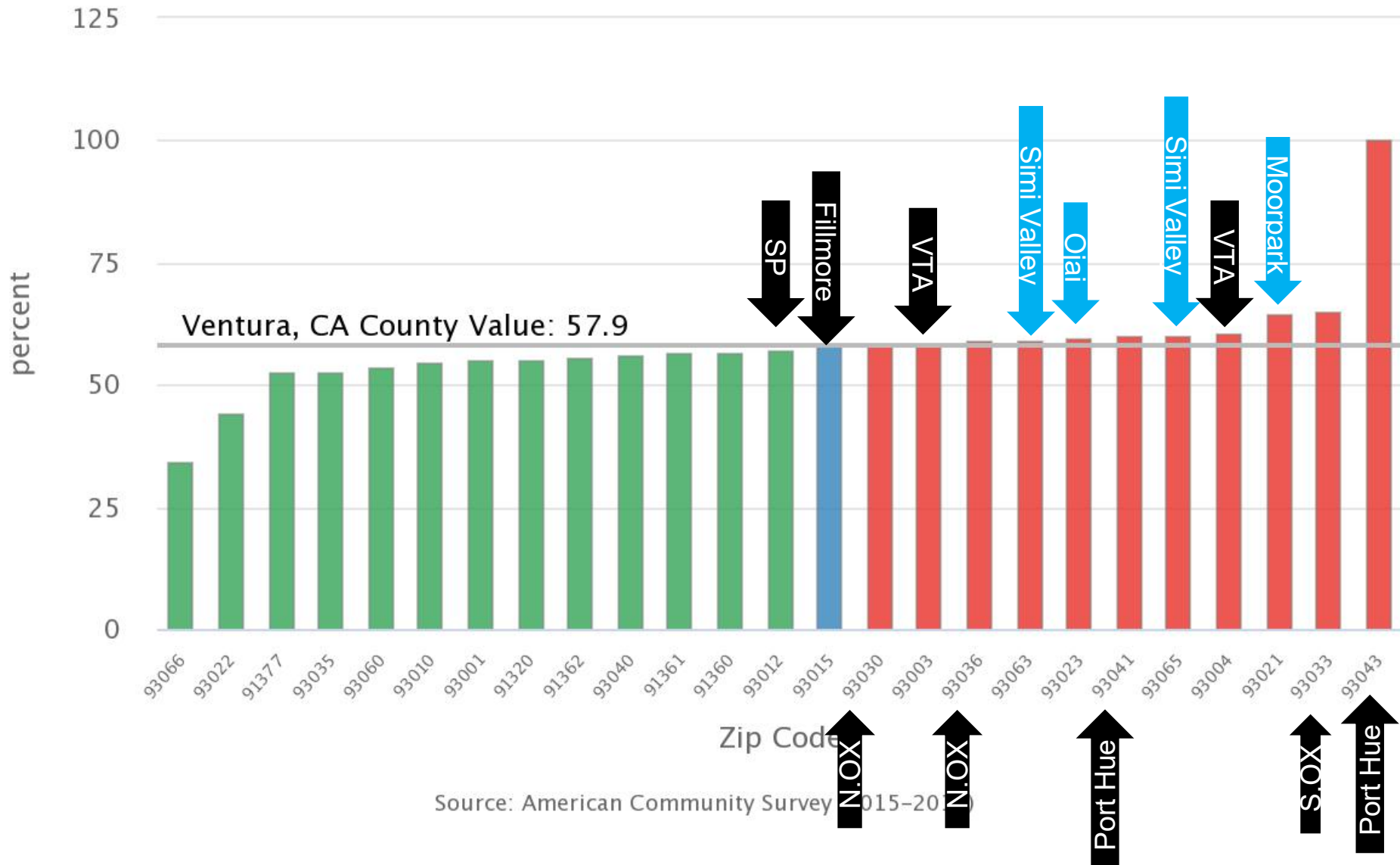
www.healthmattersinvc.org



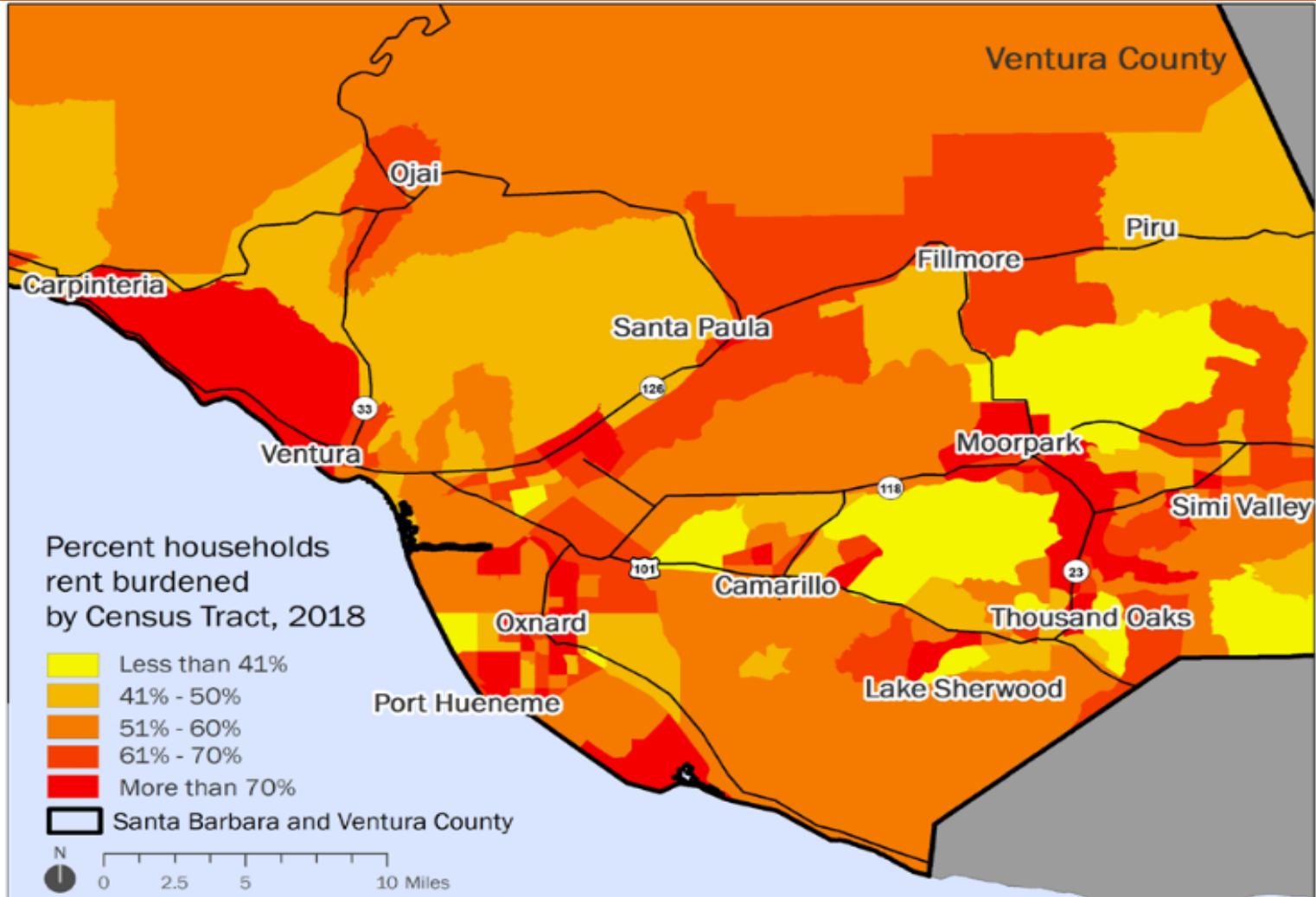
Source: American Community Survey (2015-2019)

Ventura County Statistics-Estadísticas del Condado de Ventura

Renters Spending 30% or More of Household Income on Rent

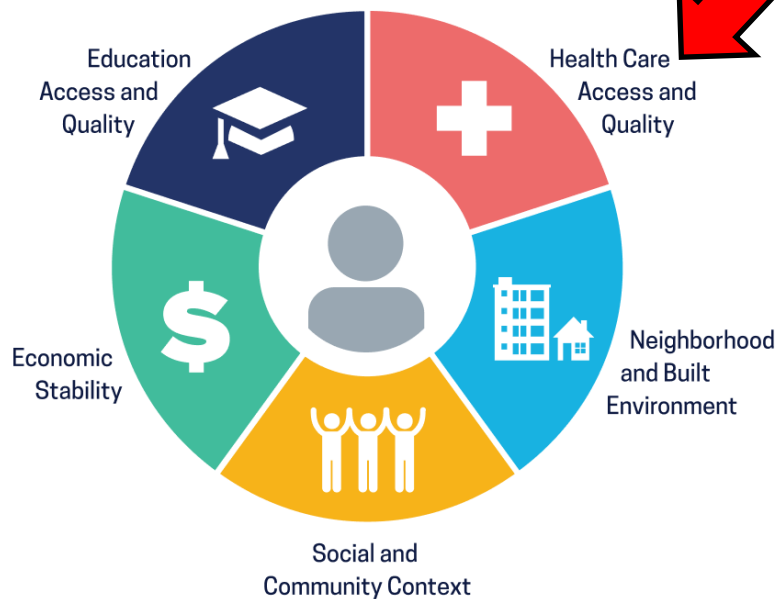


Ventura County Statistics-Estadísticas del Condado de Ventura

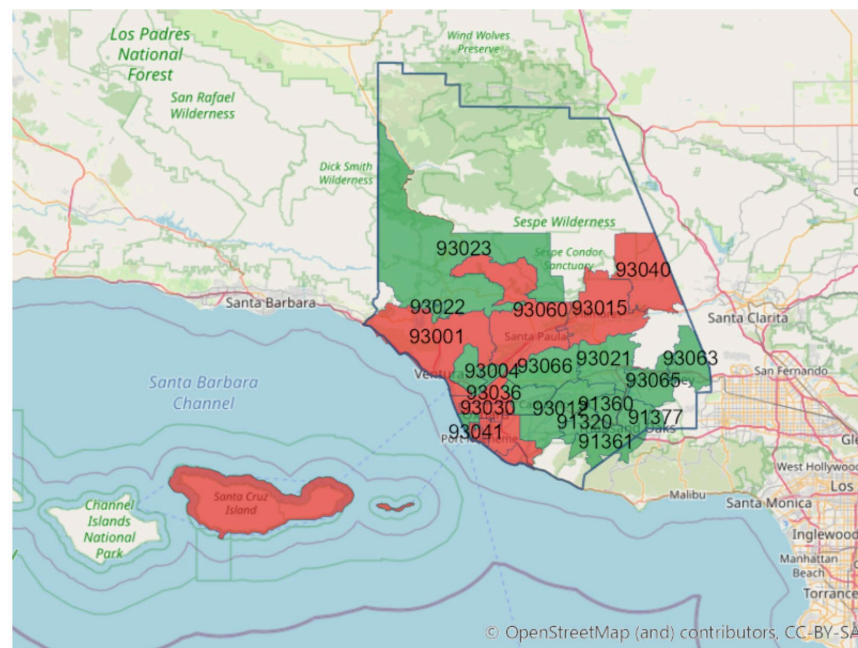


Ventura County Statistics-Estadísticas del Condado de Ventura

Social Determinants of Health



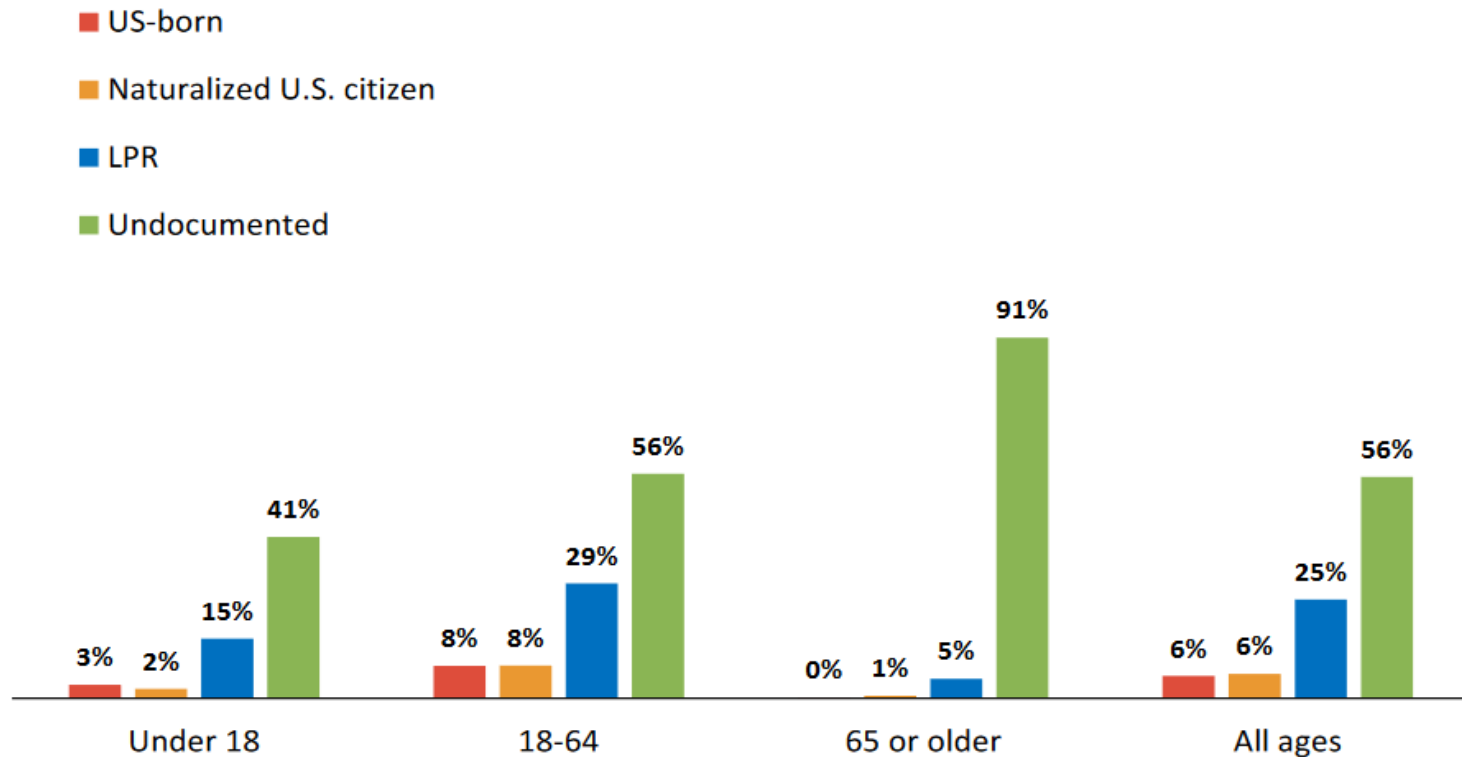
Comparison: Ventura, CA County Value
 Measurement Period: 2015-2019
 Data Source: American Community Survey



Social Determinants of Health
 Copyright-free

Living through the Pandemic: Anxiety, Trauma, and Hope *continued*

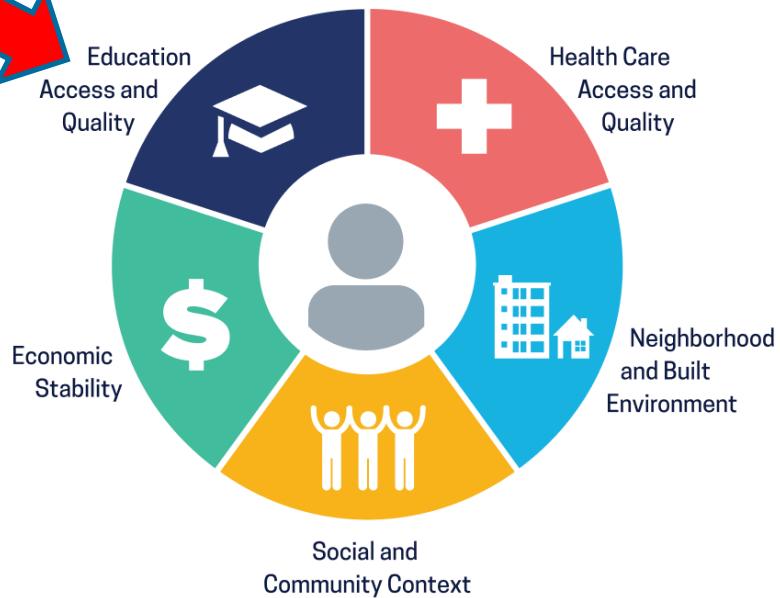
FIGURE 19: PERCENT WITH NO HEALTH INSURANCE BY IMMIGRATION STATUS AND AGE, SANTA BARBARA AND VENTURA COUNTIES, 2018



Source: USC Equity Research Institute analysis of 2018 5-year American Community Survey microdata from IPUMS USA and the 2014 Survey of Income and Program Participation. Note: Data represent a 2014 through 2018 average. See https://dornsife.usc.edu/assets/sites/731/docs/Methodology_Final_updated_ETN_2017.pdf for details on estimates of the undocumented and LPR population.

Ventura County Statistics-Estadísticas del Condado de Ventura

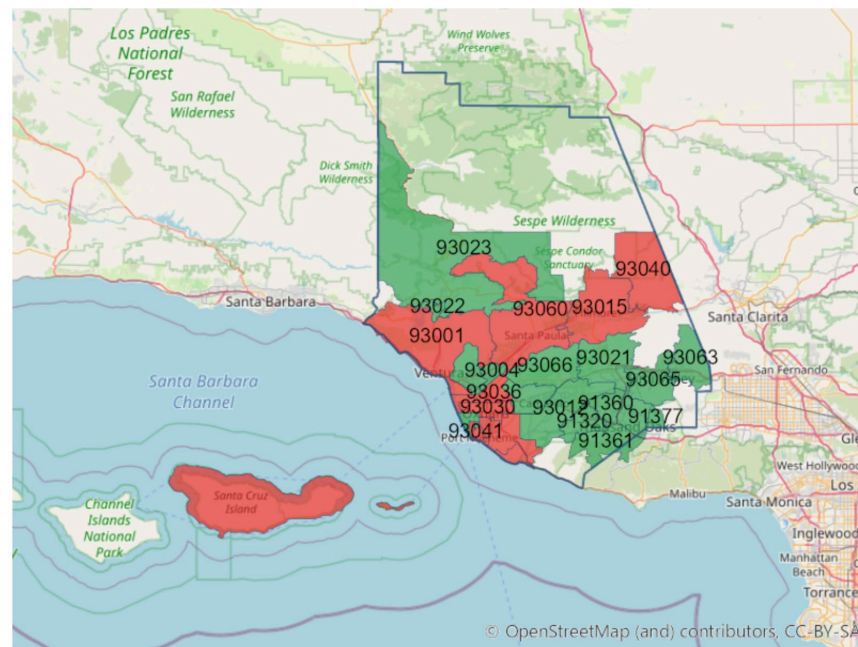
Social Determinants of Health



Social Determinants of Health
Copyright-free

Healthy People 2030

Comparison: Ventura, CA County Value
Measurement Period: 2015-2019
Data Source: American Community Survey



< 8.9%



= 8.9%



> 8.9%

Widening Divides: Trends Exacerbated by the Pandemic *continued*

FIGURE 33: MEDIAN WAGE BY EDUCATIONAL ATTAINMENT, RACE, AND GENDER, VENTURA COUNTY, 2018

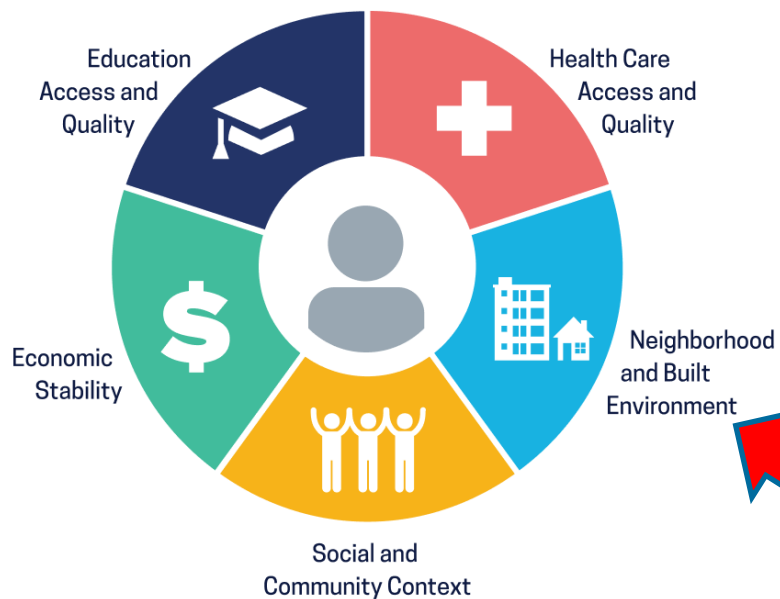


Source: USC Equity Research Institute analysis of the 2018 5-year American Community Survey microdata from IPUMS USA. Note: Universe includes civilian non-institutional full-time wage and salary workers ages 25-64. Values are in 2018 dollars. Data reflect a 2014 through 2018 average.

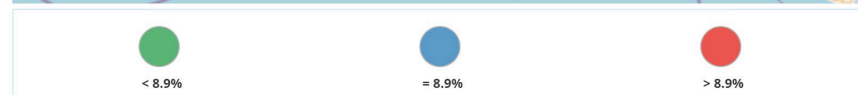
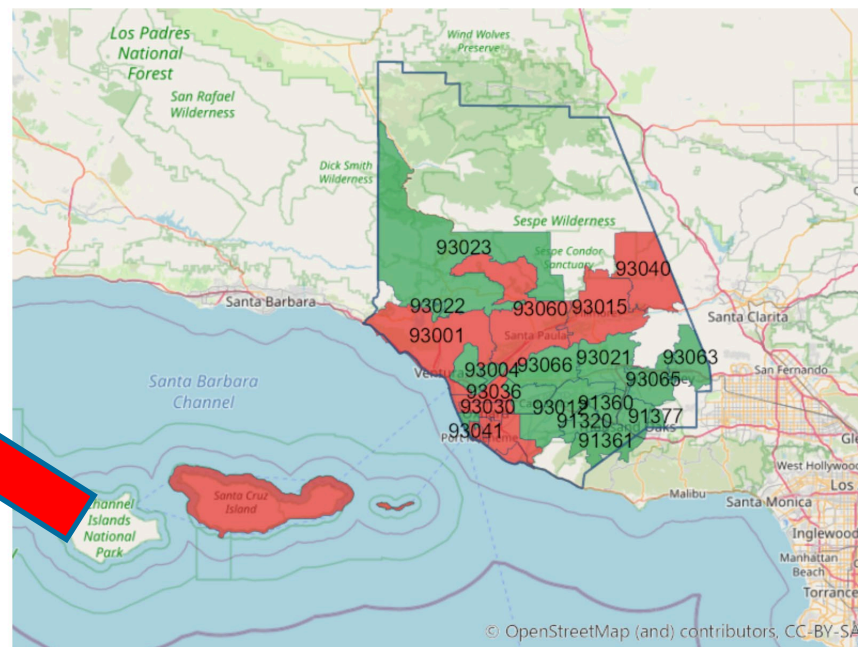


Ventura County Statistics-Estadísticas del Condado de Ventura

Social Determinants of Health

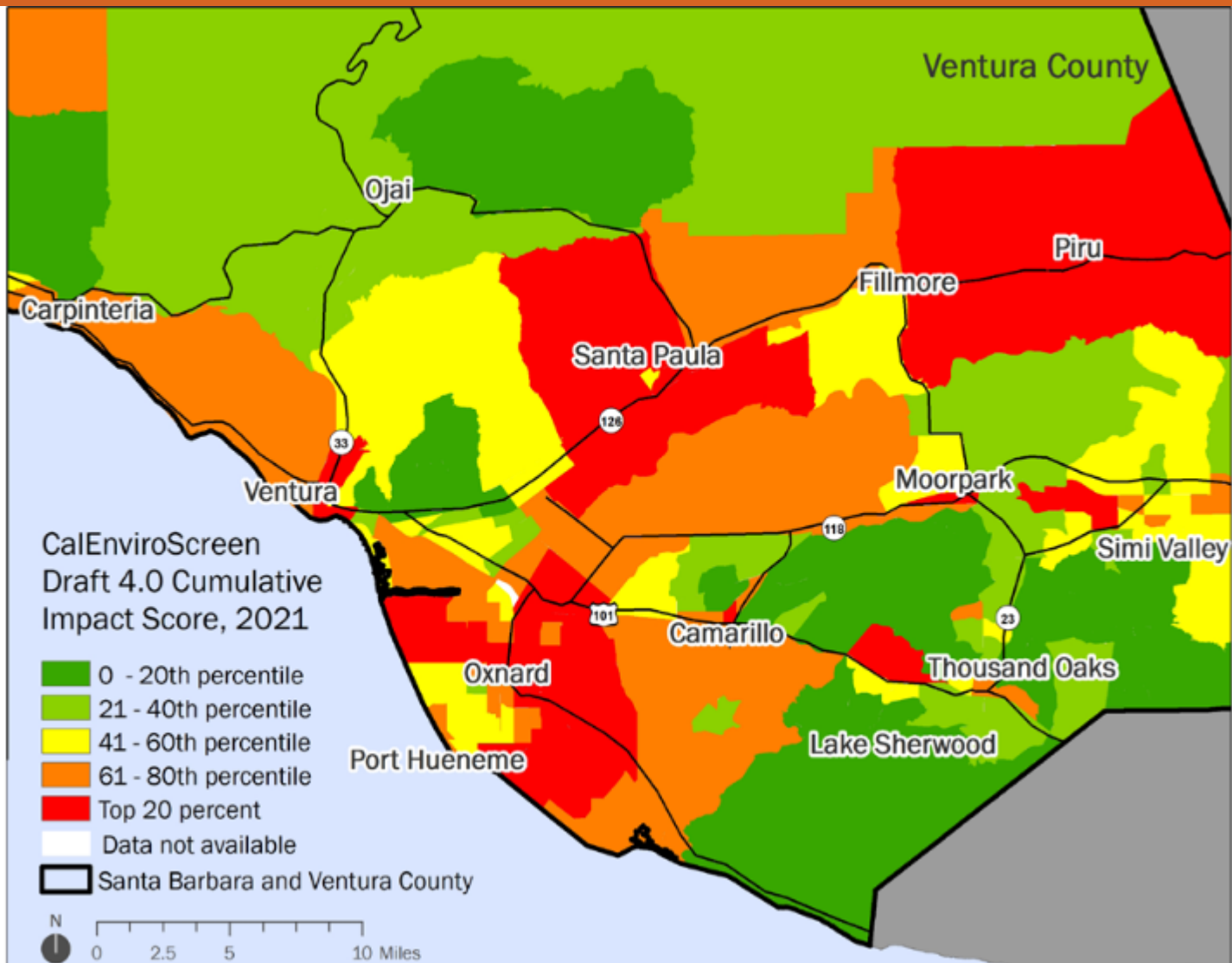


Comparison: Ventura, CA County Value
 Measurement Period: 2015-2019
 Data Source: American Community Survey



Social Determinants of Health
 Copyright-free 

Ventura County Statistics-Estadísticas del Condado de Ventura 2021



Ventura County Statistics-Estadísticas del Condado de Ventura 2021

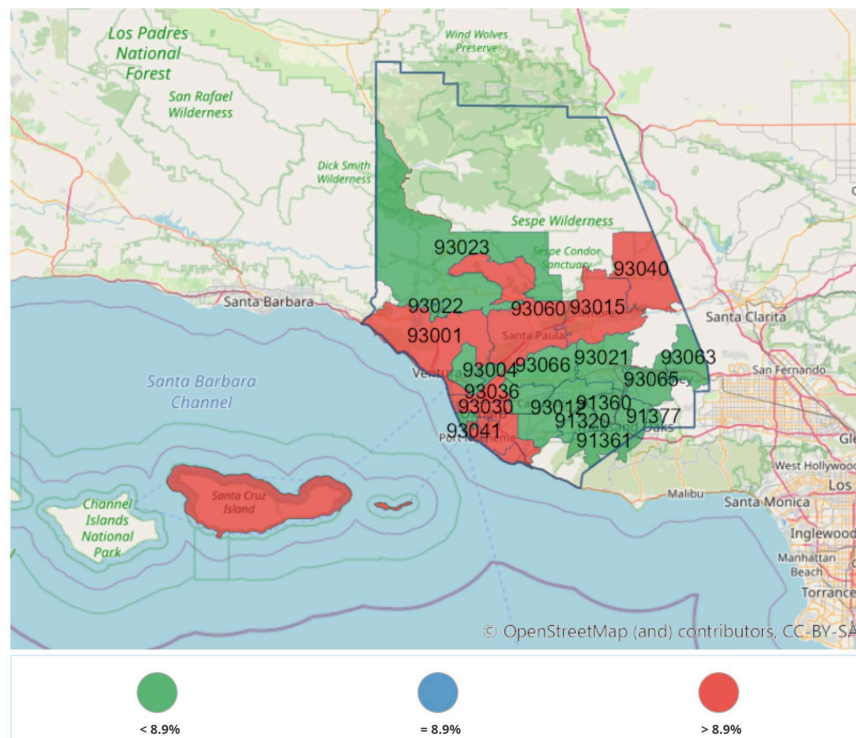
Social Determinants of Health



Social Determinants of Health
Copyright-free

Healthy People 2030

Comparison: Ventura, CA County Value
 Measurement Period: 2015-2019
 Data Source: American Community Survey



IMPROVING HEALTH AND WELL-BEING MEJORAR LA SALUD Y EL BIENESTAR

INVEST IN YOUR COMMUNITY

4 Considerations to Improve Health & Well-Being *for All*

WHAT Know What Affects Health



WHERE Focus on Areas of Greatest Need

Your zip code can be more important than your genetic code. Profound health disparities exist depending on where you live.



WHO Collaborate with Others to Maximize Efforts



HOW Use a Balanced Portfolio of Interventions for Greatest Impact

- Action in one area may produce positive outcomes in another.
- Start by using interventions that work across all four action areas.
- Over time, increase investment in socioeconomic factors for the greatest impact on health and well-being for all.

Four ACTION Areas



VISIT www.cdc.gov/CHInav FOR TOOLS AND RESOURCES TO IMPROVE YOUR COMMUNITY'S HEALTH AND WELL-BEING



MARCH 2015

IMPROVING HEALTH AND WELL-BEING MEJORAR LA SALUD Y EL BIENESTAR

WHAT

Know What Affects Health



- MHA Needs Assessment
- County Schools Needs Assessment
- Data from all community partners
- Number of clinics, hospitals
- Access barriers

- Pollution Burdened Communities
- Thomas Fire
- Pandemic
- Emergency Response Plan

- Lack of Sleep
- Poor Nutrition
- Obesity
- Substance Use

IMPROVING HEALTH AND WELL-BEING

MEJORAR LA SALUD Y EL BIENESTAR

Médicos de
proveedores
psiquiátricos
bilingües/trilingües

Bilingual/Trilingual
Psychiatric
Providers
Clinicians

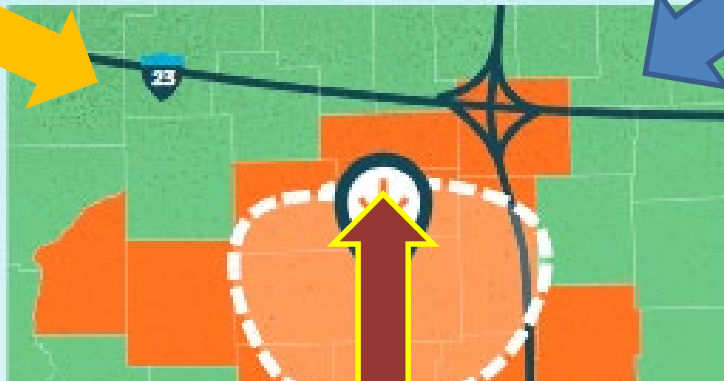
Transitional Behavioral
Health
Career Pipeline towards
mental health careers
(Worker Employment
Training)

Transitional Behavioral
Health Trayectoria
profesional hacia las carreras
de salud mental
(Capacitación laboral de los
trabajadores)

WHERE

Focus on Areas of Greatest Need

Your zip code can be more important than your
genetic code. Profound health disparities exist
depending on where you live.



Prevención Intervención temprana
Alcance
Asistencia para navegar por el sistema de salud
Conexión a las clínicas

Prevention Early Intervention
Outreach
Support in navigating Health System
Connecting to clinics

Number of clinics within
limits of residential
areas

Número de clínicas
dentro de los límites de
las áreas residenciales

Ventura Avenue
East Ventura

Logrando Bienestar
Wellness Center-Centros
de Bienestar
RISE
ACCESS
Promotor(x)s Groups
Peers
MHSA FUNDED
GROUPS

IMPROVING HEALTH AND WELL-BEING MEJORAR LA SALUD Y EL BIENESTAR





VENTURA COUNTY

BEHAVIORAL HEALTH

A Department of Ventura County Health Care Agency

DISCUSSION
