

BEHAVIORAL HEALTH ADVISORY BOARD  
**DISPARITIES REDUCTION COMMITTEE**  
**MINUTES ■ Tuesday, April 12, 2022**

<p><b>Members Present</b>          Marlen Torres, Chair          Genevieve Flores-Haro          Patricia Mowlavi</p> <p><b>Others Present</b>          Stephanie Escoto, BHAB          Carol J. Keavney, BHAB          Lorena Suarez, Interpreter</p>	<p><b>Ventura County Behavioral Health (VCBH) Managers/Staff Present</b>          Cynthia Salas, Equity Services Manager          Joanna Peterson, Management Assistant / Zoom Engineer          Vickie Poliquin, BHAB Assistant</p> <p><b>NEXT MEETING:</b>  <b>Tuesday, May 3, 2022, 4:30 PM – 5:30 PM</b></p> <p><b>Zoom Meeting:</b>  <a href="https://us02web.zoom.us/j/87680728818?pwd=b3dCdjBNcGszRUJ4VzM2TXY1cJlJQT09">https://us02web.zoom.us/j/87680728818?pwd=b3dCdjBNcGszRUJ4VzM2TXY1cJlJQT09</a>  <b>Meeting ID: 876 8072 8818</b>  <b>Password: 156974</b>  <b>Dial-in: 669-900-9128</b></p>
---	--

Note: The committee has not yet approved these minutes. There may be additions/deletions or corrections before the minutes are accepted in final form.

	DISCUSSION/CONCLUSIONS	RECOMMENDATIONS/ ACTIONS	RESPONSIBLE
I.	<b>Call to Order</b> Chair Torres called the meeting of the Disparities Reduction Committee to order at 4:36 PM following the instructions that were provided by Joanna Peterson on how to access interpretation services.		
II.	<b>Roll Call</b> Vickie Poliquin called roll from the list of seven Disparities Reduction Workgroup members whose membership has officially transferred to the BHAB’s Disparities Reduction Committee. (Reference: The Board of Supervisors approved the BHAB’s amended Bylaws to add the new Committee at its January 11, 2022 meeting.) With only three members present at the meeting, a quorum of five members was not established and no action will be taken.	A quorum was not established. No action will be taken.	
III.	<b>Welcome and Introductions</b> Ms. Torres thanked participants and members for joining the meeting and thanked the members for their work within the Workgroup to transition the Workgroup to a BHAB Committee. She asked that members take a moment to celebrate their accomplishments in making this transition possible and provided a special thank you to Cynthia Salas for preparing a presentation to kick-off the first meeting of the Committee. Meeting participants and Committee members introduced themselves.		
IV.	<b>Approval of the Agenda</b> The agenda could not be officially approved due to lack of a quorum. No action will take place.	No action taken due to lack of a quorum.	
V.	<b>Public Comments</b> None.		
VI.	<b>Chair Comments</b> Ms. Torres noted that her opening comments were provided under agenda item III.		
VII.	<b>Presentation: Disparities in Ventura County</b> Cynthia Salas, Equity Services Manager - Office of Health Equity and Cultural Diversity provided a comprehensive presentation highlighting and overviewing statistical information about the existing disparities within Ventura County. Her presentation contained explanations, examples and various terms and definitions of disparities, Social Determinants of Health and Health Disparities as well as an overview of four action areas for consideration to improve health and well-being for all.  Ms. Torres asked a question about whether the Mental Health Services Act (MHSA) Assessment was tied to Public Health’s Community Needs Assessment and if the Public Health Assessment would ask about mental health needs within communities. Cynthia Salas provided a response stating that Dr. Jamie Rotnofsky, MHSA Manager, is working closely with Public Health to ensure the Assessments are shared throughout the county including the establishment of focus groups throughout different parts of the county to ensure that the feedback that is received is reflective of all of Ventura County.		

	<p>Ms. Keavney suggested that Cynthia Salas provide her comprehensive presentation to the full Behavioral Health Advisory Board at one of its General meetings. Ms. Keavney inquired about the County’s creation of a Commission in 2020 during the focus of “Black Lives Matter” and it was determined that racism is a health threat. Cynthia Salas provided information regarding the Diversity, Equity and Inclusion Council of Ventura County in which she is the Chair. She noted that the Council has formed two committees. One Committee is the Health Equity Advisory Committee comprised of eight community members, seven Health Care Agency representatives and the Directors and designated managers from each Department and is tasked with addressing disparity items. Cynthia Salas offered to inquire whether there will be any other studies derived from this newly formed Committees. The second Committee is the Safety Racial Equity Advisory Committee that is composed of community leaders, law enforcement leadership including the District Attorney, Probation, the Sheriff’s Office and local law enforcement Police Chiefs established to address different issues tied to the Resolution declaring Racism is a Public Health Crisis. Cynthia Salas will provide Ms. Torres with the scheduled dates and times of the two Committee and encouraged members of the Disparities Reduction to attend these public Committee meetings.</p> <p>Ms. Torres noted that Cynthia Salas’ presentation provides a solid foundation for the Committee to begin thinking about other topics and additional reports and research documents that may be needed in the development of the Committee’s intent of the work as well as any future Committee recommendations. Ms. Torres concurred with the request that Cynthia Salas provide her presentation to the full BHAB. She asked that any additional follow-up questions related to Cynthia Salas’ presentation be sent to her or Vickie Poliquin via email.</p>		
<p><b>VIII.</b></p>	<p><b>New Business</b></p> <p>A. Discuss the Committee’s Strategy Objectives and Next Steps  Ms. Torres summarized the process of developing the Committee for the benefit of those who were not a part of the Workgroup. She noted that the Workgroup was formed and tasked with developing a statement of purpose for inclusion in the BHAB Bylaws for approval and for transitioning the Workgroup into a standing Committee of the BHAB. Ms. Torres advised that the Committee’s purpose statement contained in the Bylaws will be shared to Committee members as a reminder of the areas of focus and that the Committee will begin its work in establishing objectives and goals in the form of a report.</p> <p>B. Discuss Future Presentations  Ms. Torres asked Committee members to advise her in advance of any presentation requests for the next meeting.</p> <p>Cynthia Salas made a recommendation, if it interests the Committee, to provide a presentation that would explain the importance of understanding the class standards and the State’s assessment criteria that ensures VCBH is culturally and linguistically in line with how its services are delivered noting that the presentation would also benefit the community’s understanding of how VCBH is meets the needs of the community. Ms. Torres concurred with providing this presentation to the Committee at a future meeting expressing that the information will provide a foundation that will strengthen the Committee and its work. The presentation is planned for either the May or June Committee meeting.</p> <p>C. Discuss Meeting Frequency  Ms. Torres noted that the Committee will plan to meet monthly. Discussion ensued regarding the possible difficulties with meeting on the second Tuesday of each month at 4:30 PM due to the Prevention Committee’s schedule on this same date that meeting from 3:15 to 4:30 PM causing the BHAB Committees to be back-to-back and not allowing enough time to close and open the Zoom meeting platform. It was determined that the Disparities Reduction Committee will meet on the first Tuesday of the month from 4:30 to 5:30 PM beginning with its next meeting on May 3.</p>		
<p><b>IX.</b></p>	<p><b>Adjourn</b>  The meeting adjourned at 5:53 PM.</p>		



VENTURA COUNTY

**BEHAVIORAL HEALTH**

A Department of Ventura County Health Care Agency

# Disparities in Ventura County

## Disparidades en el Condado de Ventura

Cynthia Salas, Equity Services Manager  
Office of Health Equity and Cultural Diversity –Ventura County Behavioral Health

Cynthia Salas, Gerente de Servicios de Equidad  
Oficina de Equidad en Salud y Diversidad Cultural –Ventura County Behavioral Health

April 12, 2022

# Terms and Definitions-Términos y Definiciones

## Disparities

- The quantity that separates a group from a reference point on a particular measure of health that is expressed in terms of rate, proportion, mean, or some other quantitative measure. (HP2010)\*\*

## Social Determinants of Health

- Social determinants of health (SDOH) are the conditions in the environments where people are born, live, learn, work, play, worship, and age that affect a wide range of health, functioning, and quality-of-life outcomes and risks.\*

## Disparidades

- Cantidad que separa a un grupo de un punto de referencia sobre una medida particular de salud que se expresa en términos de tasa, proporción, media o alguna otra medida cuantitativa. (HP2010)\*\*

## Determinantes sociales de la salud

- Los determinantes sociales de la salud (SDOH) son las condiciones en los entornos donde las personas nacen, viven, aprenden, trabajan, juegan, adoración, y edad que afecta una amplia gama de resultados y riesgos de salud, funcionamiento y calidad de vida.\*

# Terms and Definitions-Términos y Definiciones

## Health Disparities

### Health Disparity Definition

- A health disparity (HD) is a health difference that adversely affects disadvantaged populations, based on one or more of the following health outcomes:
- Higher incidence and/or prevalence and earlier onset of disease
- Higher prevalence of risk factors, unhealthy behaviors, or clinical measures in the causal pathway of a disease outcome
- Higher rates of condition-specific symptoms, reduced global daily functioning, or self-reported health-related quality of life using standardized measures
- Premature and/or excessive mortality from diseases where population rates differ
- Greater global burden of disease using a standardized metric (NIH)\*\*

## Disparidades en la salud

### Definición de la disparidad en la salud

- Una disparidad de salud (EH) es una diferencia de salud que afecta negativamente a las poblaciones desfavorecidas, basada en uno o más de los siguientes resultados de salud:
- Mayor incidencia y/o prevalencia y aparición más temprana de la enfermedad
- Mayor prevalencia de factores de riesgo, comportamientos poco saludables o medidas clínicas en la vía causal de un resultado de enfermedad
- Tasas más altas de síntomas específicos de la afección, reducción del funcionamiento diario mundial o calidad de vida relacionada con la salud autoinformada utilizando medidas estandarizadas
- Mortalidad prematura y / o excesiva por enfermedades donde las tasas de población difieren
- Mayor carga global de enfermedad utilizando una métrica estandarizada (NIH)\*\*



# Terms and Definitions-Términos y Definiciones

## Social Determinants of Health Five Domains

Social determinants of health (SDOH) have a major impact on people's health, well-being, and quality of life. Examples of SDOH include:

- ❖ Safe housing, transportation, and neighborhoods
- ❖ Racism, discrimination, and violence
- ❖ Education, job opportunities, and income
- ❖ Access to nutritious foods and physical activity opportunities
- ❖ Polluted air and water
- ❖ Language and literacy skills



Social Determinants of Health  
Healthy People 2030

## Determinantes sociales de la salud Cinco dominios

Los determinantes sociales de la salud (SDOH) tienen un impacto importante en la salud, el bienestar y la calidad de vida de las personas. Ejemplos de SDOH incluyen:

- ❖ Vivienda segura, transporte y vecindarios
- ❖ Racismo, discriminación y violencia
- ❖ Educación, oportunidades de trabajo e ingresos
- ❖ Acceso a alimentos nutritivos y oportunidades de actividad física
- ❖ Aire y agua contaminados
- ❖ Habilidades lingüísticas y de alfabetización

# Example/Ejemplo



- For example, African American/Black women and Latinas experience lower survival rates from triple-negative breast cancer than White women with the same disease—even with similar access to care, screening mammography, and insurance coverage—due to the lack of specialized screening and lack of viable treatment options available for this form of breast cancer.\*\*\*
- Women from racial/ethnic minority populations in the United States present with a more advanced stage of breast cancer. **[The] study quantifies the extent to which insurance mediates this difference.**

- Por ejemplo, las mujeres y latinas afroamericanas/negras experimentan tasas de supervivencia más bajas de cáncer de mama triple negativo que las mujeres blancas con la misma enfermedad, incluso con un acceso similar a la atención, mamografía de detección y cobertura del seguro, debido a la falta de exámenes especializados y la falta de opciones de tratamiento viables disponibles para esta forma de cáncer de mama. \* \* \*
- Las mujeres de poblaciones de minorías raciales / étnicas en los Estados Unidos se presentan con una etapa más avanzada de cáncer de mama. **[El] estudio cuantifica hasta qué punto el seguro media esta diferencia.**

# SDOH CATEGORIES/SDOH Categorie

## SDOH Categories



Housing



Health Literacy



Food



Financial Strain



Utilities



Transportation



Safety



Childcare



Employment



Health Insurance



Family &  
Community Support

# Ventura County Statistics- Estadísticas del Condado de Ventura

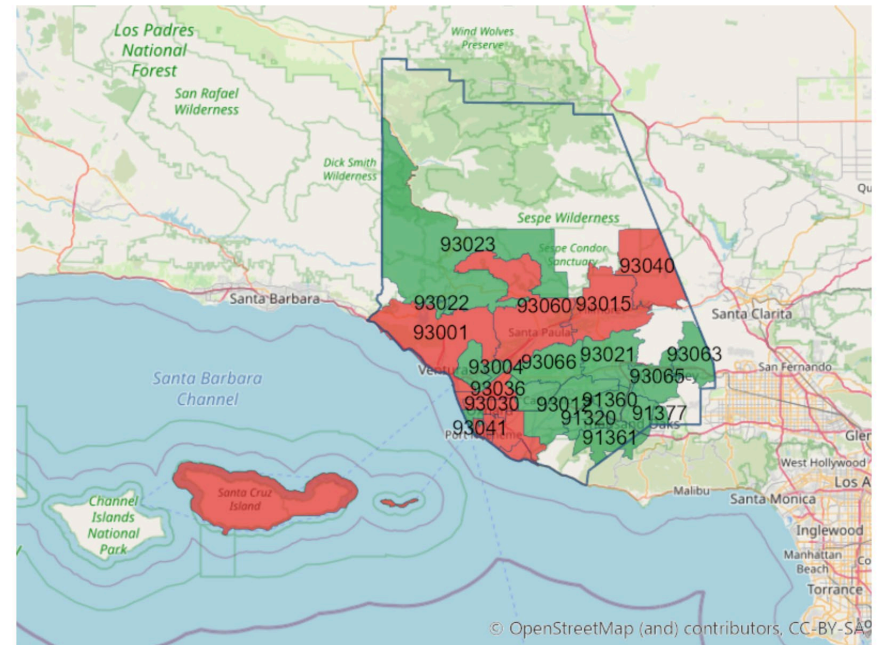
## Social Determinants of Health



Social Determinants of Health  
Copyright-free

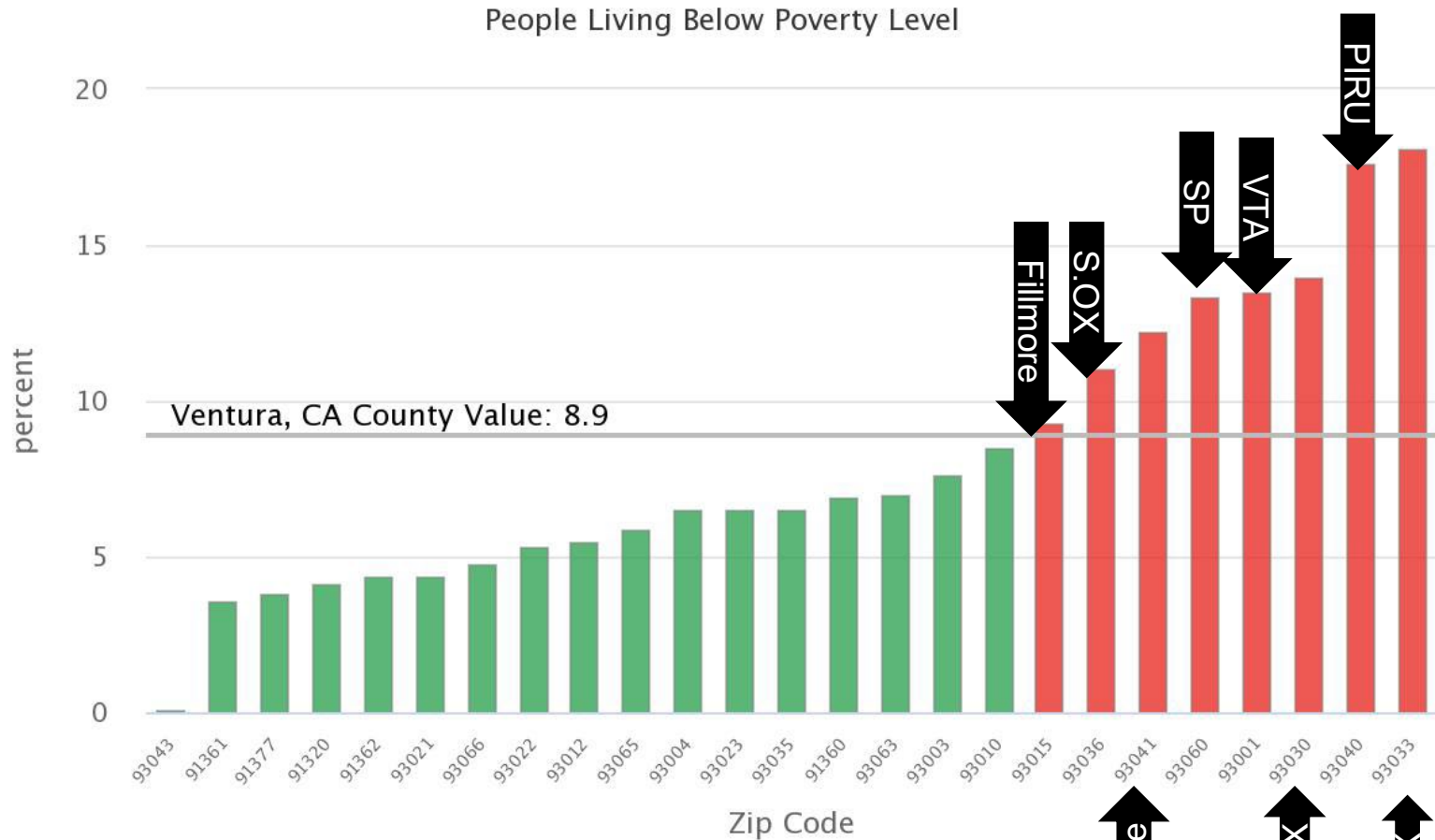
Healthy People 2030

Comparison: Ventura, CA County Value  
Measurement Period: 2015-2019  
Data Source: American Community Survey



# Ventura County Statistics-Estadísticas del Condado de Ventura

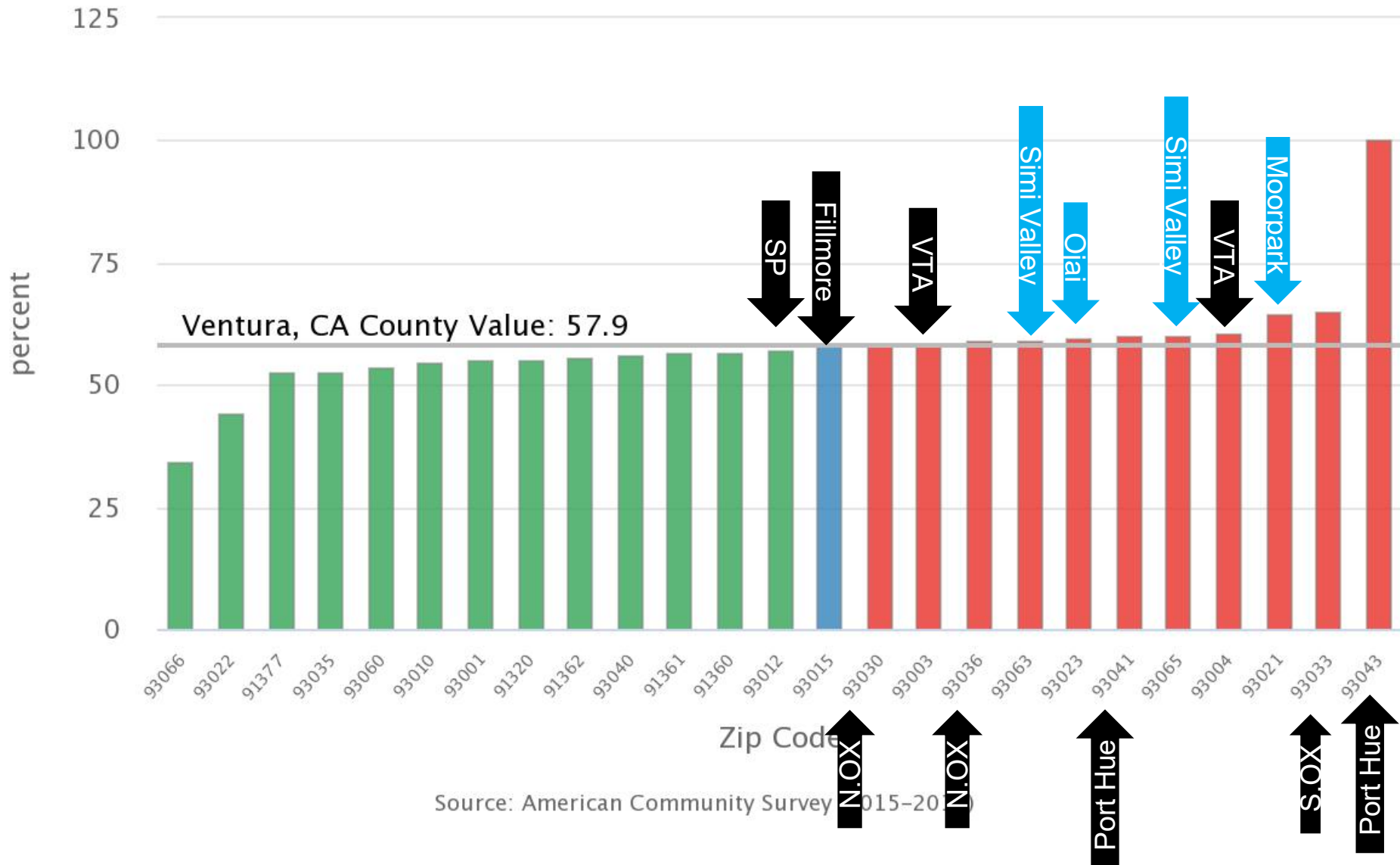
www.healthmattersinvc.org



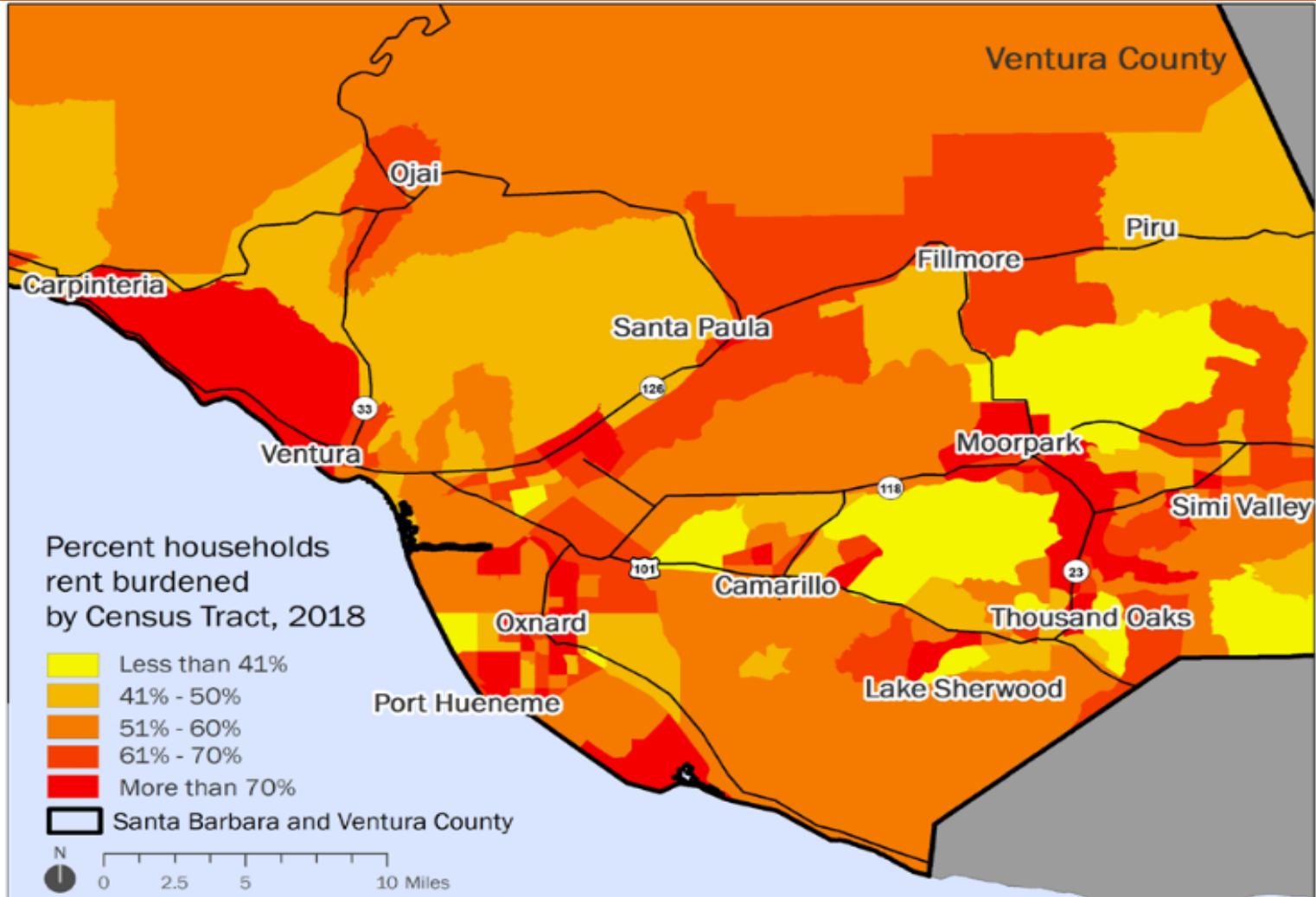
Source: American Community Survey (2015-2019)

# Ventura County Statistics-Estadísticas del Condado de Ventura

## Renters Spending 30% or More of Household Income on Rent

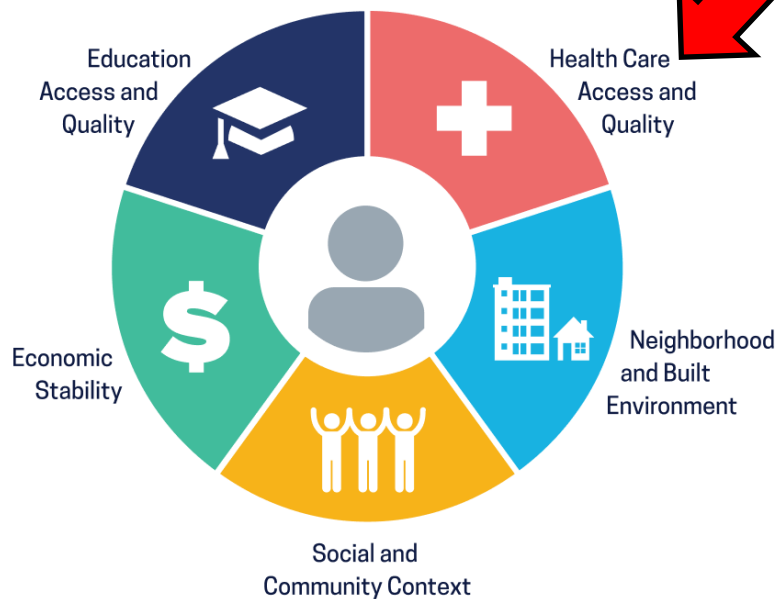


# Ventura County Statistics-Estadísticas del Condado de Ventura

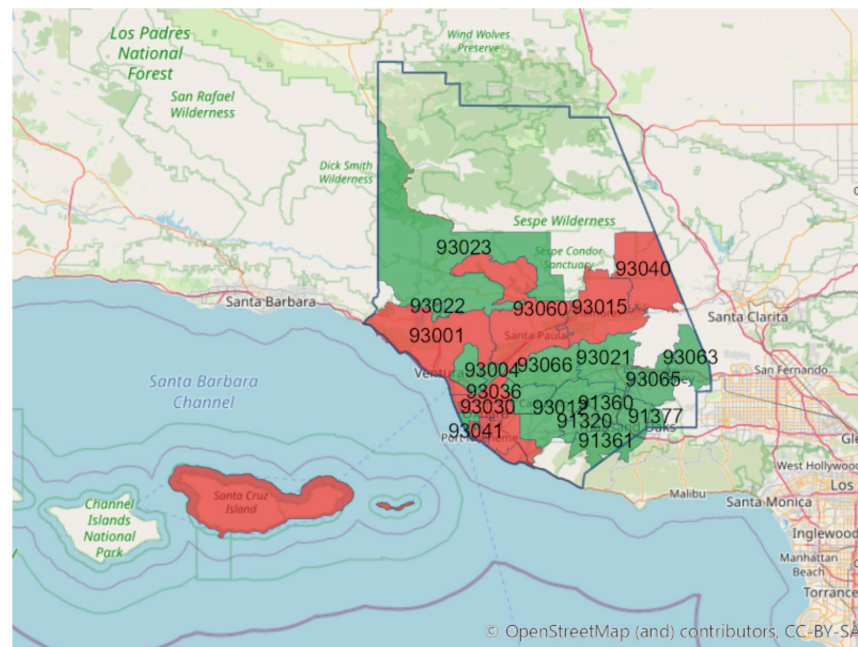


# Ventura County Statistics-Estadísticas del Condado de Ventura

## Social Determinants of Health



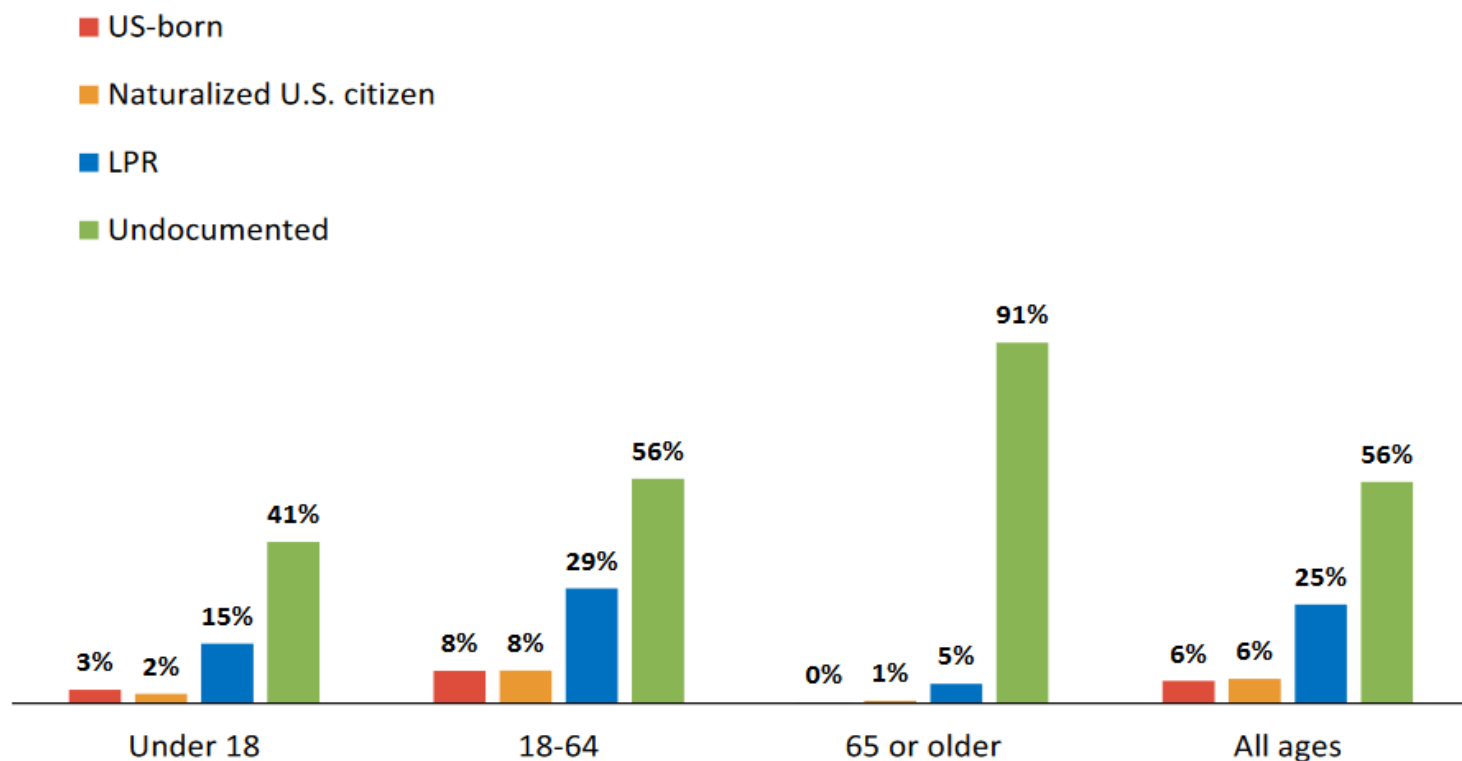
Comparison: Ventura, CA County Value  
 Measurement Period: 2015-2019  
 Data Source: American Community Survey



Social Determinants of Health  
 Copyright-free Healthy People 2030

## Living through the Pandemic: Anxiety, Trauma, and Hope *continued*

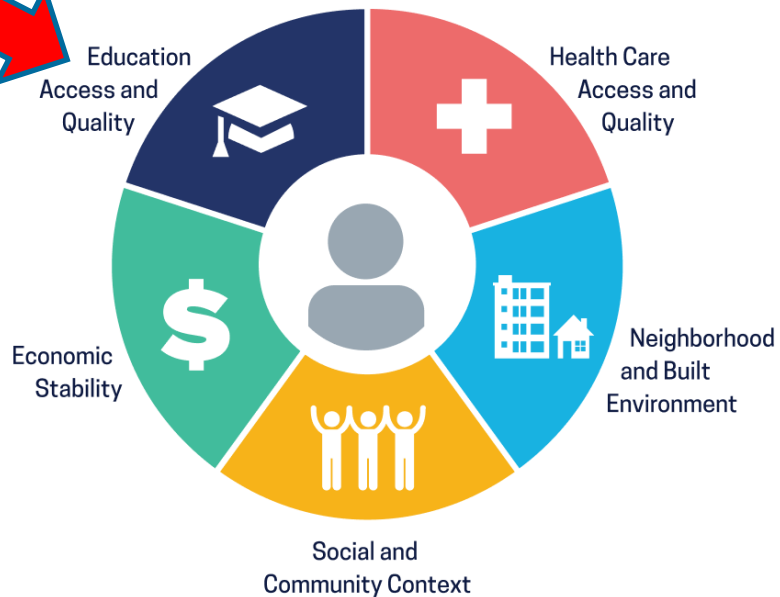
FIGURE 19: PERCENT WITH NO HEALTH INSURANCE BY IMMIGRATION STATUS AND AGE, SANTA BARBARA AND VENTURA COUNTIES, 2018



Source: USC Equity Research Institute analysis of 2018 5-year American Community Survey microdata from IPUMS USA and the 2014 Survey of Income and Program Participation. Note: Data represent a 2014 through 2018 average. See [https://dornsife.usc.edu/assets/sites/731/docs/Methodology\\_Final\\_updated\\_ETN\\_2017.pdf](https://dornsife.usc.edu/assets/sites/731/docs/Methodology_Final_updated_ETN_2017.pdf) for details on estimates of the undocumented and LPR population.

# Ventura County Statistics-Estadísticas del Condado de Ventura

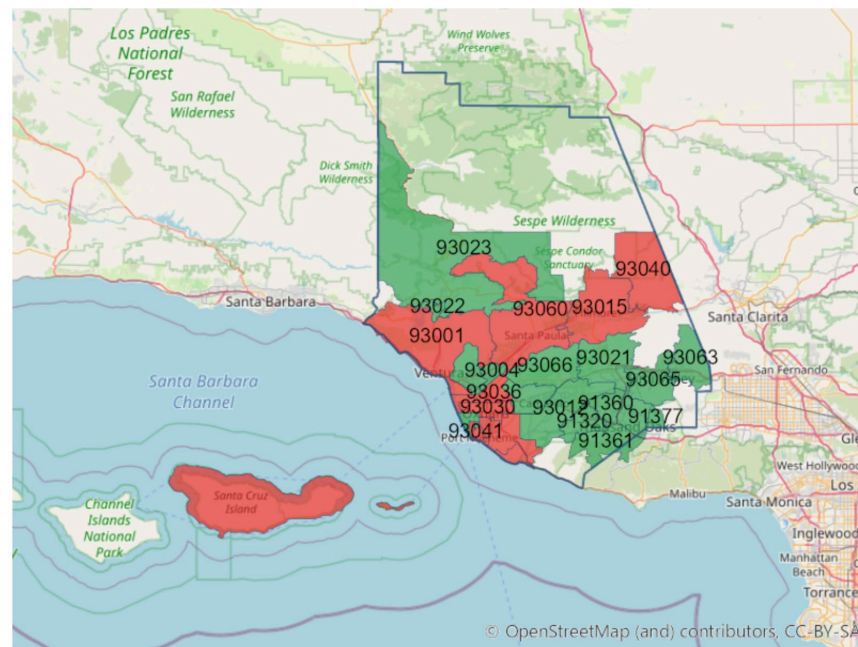
## Social Determinants of Health



Social Determinants of Health  
Copyright-free



Comparison: Ventura, CA County Value  
Measurement Period: 2015-2019  
Data Source: American Community Survey



< 8.9%

= 8.9%

> 8.9%

## Widening Divides: Trends Exacerbated by the Pandemic *continued*

FIGURE 33: MEDIAN WAGE BY EDUCATIONAL ATTAINMENT, RACE, AND GENDER, VENTURA COUNTY, 2018



Source: USC Equity Research Institute analysis of the 2018 5-year American Community Survey microdata from IPUMS USA. Note: Universe includes civilian non-institutional full-time wage and salary workers ages 25-64. Values are in 2018 dollars. Data reflect a 2014 through 2018 average.

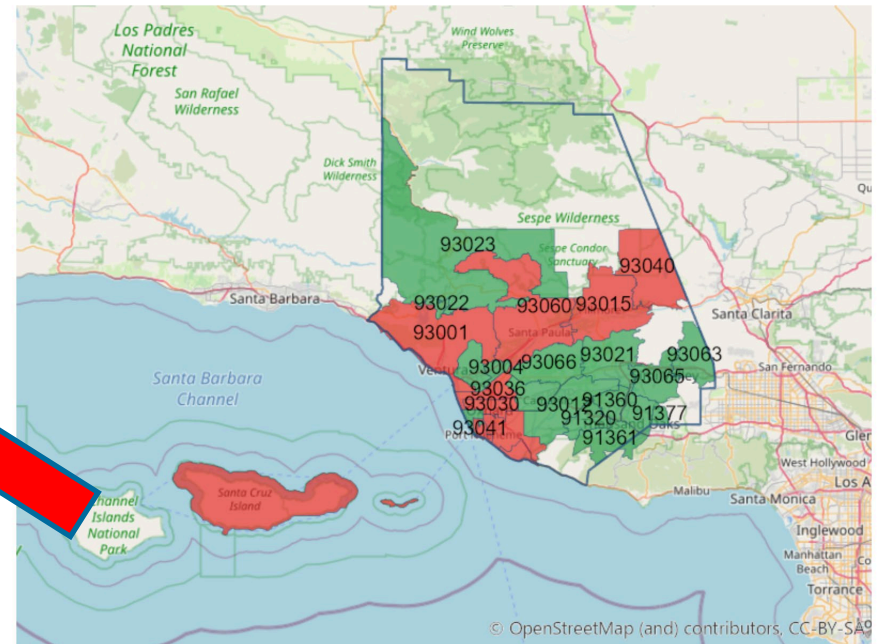


# Ventura County Statistics-Estadísticas del Condado de Ventura

## Social Determinants of Health



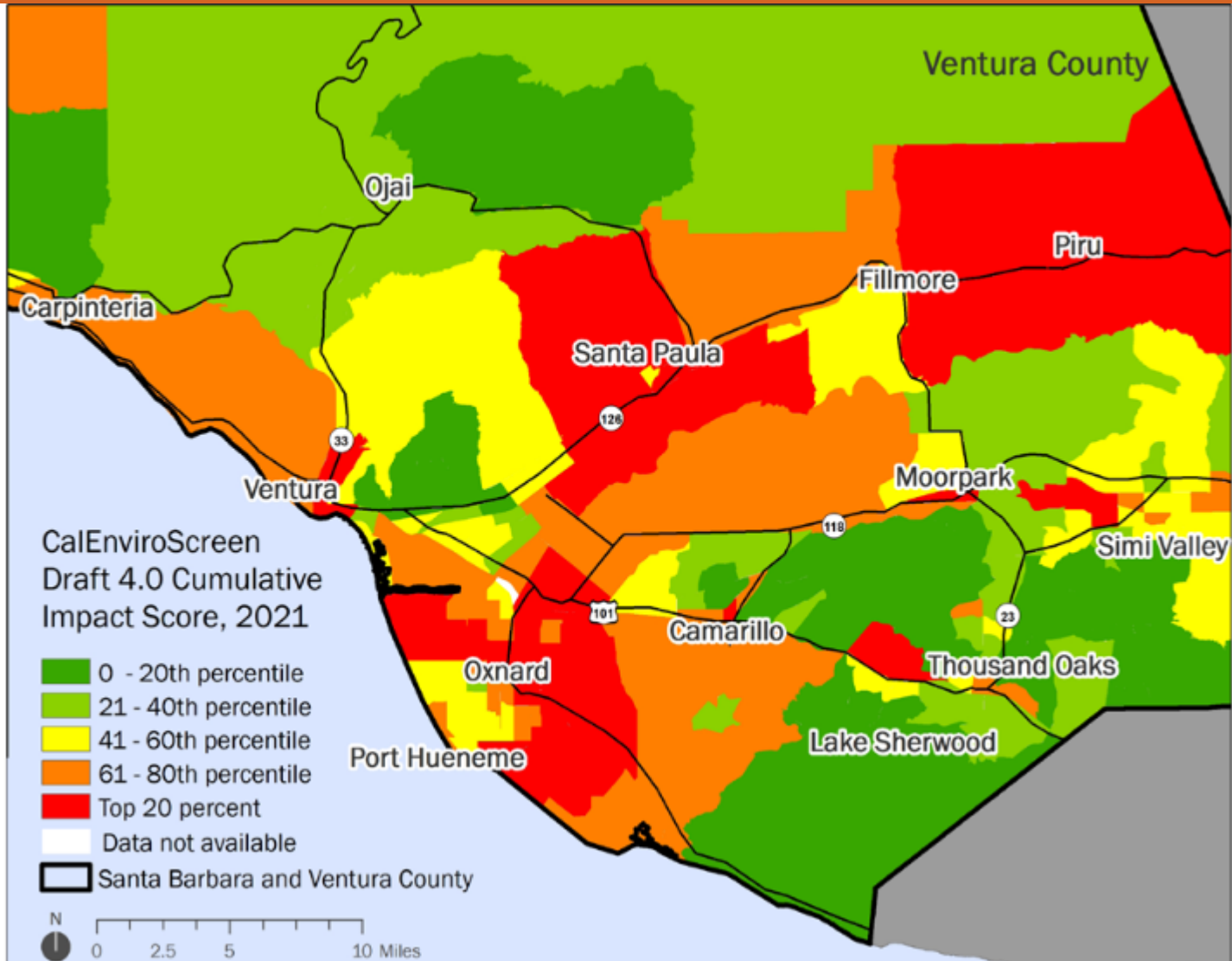
Comparison: Ventura, CA County Value  
 Measurement Period: 2015-2019  
 Data Source: American Community Survey



Social Determinants of Health  
 Copyright-free

Healthy People 2030

# Ventura County Statistics-Estadísticas del Condado de Ventura 2021



# Ventura County Statistics-Estadísticas del Condado de Ventura 2021

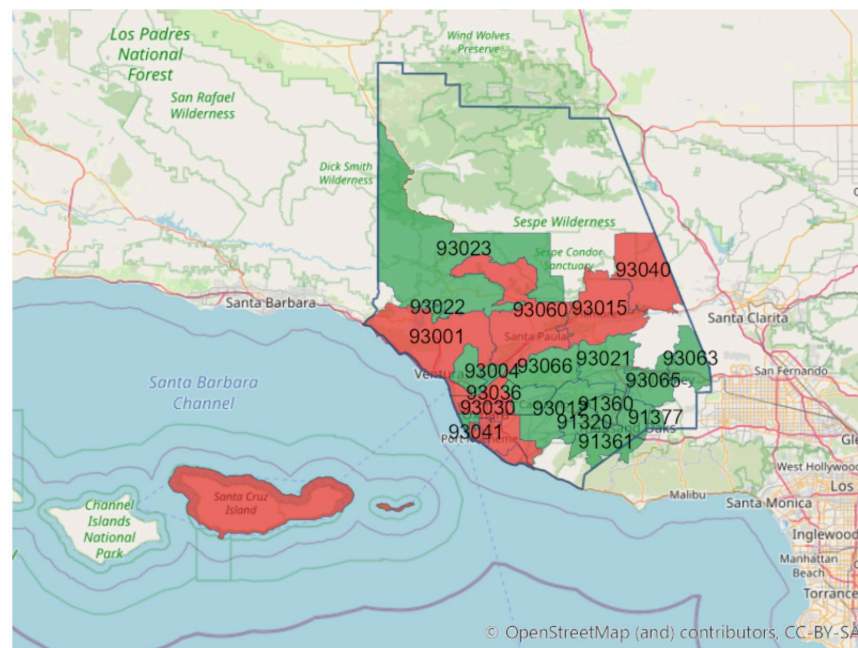
## Social Determinants of Health



Social Determinants of Health  
Copyright-free

Healthy People 2030

Comparison: Ventura, CA County Value  
Measurement Period: 2015-2019  
Data Source: American Community Survey



< 8.9%



= 8.9%



> 8.9%

# IMPROVING HEALTH AND WELL-BEING MEJORAR LA SALUD Y EL BIENESTAR

## INVEST IN YOUR COMMUNITY

4 Considerations to Improve Health & Well-Being *for All*

### WHAT Know What Affects Health



### WHERE Focus on Areas of Greatest Need

Your zip code can be more important than your genetic code. Profound health disparities exist depending on where you live.



### WHO Collaborate with Others to Maximize Efforts



### HOW Use a Balanced Portfolio of Interventions for Greatest Impact

- Action in one area may produce positive outcomes in another.
- Start by using interventions that work across all four action areas.
- Over time, increase investment in socioeconomic factors for the greatest impact on health and well-being for all.

Four ACTION Areas



VISIT [www.cdc.gov/CHInav](http://www.cdc.gov/CHInav) FOR TOOLS AND RESOURCES TO IMPROVE YOUR COMMUNITY'S HEALTH AND WELL-BEING



MARCH 2015

# IMPROVING HEALTH AND WELL-BEING MEJORAR LA SALUD Y EL BIENESTAR

## WHAT

Know What Affects Health



- MHA Needs Assessment
- County Schools Needs Assessment
- Data from all community partners
- Number of clinics, hospitals
- Access barriers

- Pollution Burdened Communities
- Thomas Fire
- Pandemic
- Emergency Response Plan

- Lack of Sleep
- Poor Nutrition
- Obesity
- Substance Use

# IMPROVING HEALTH AND WELL-BEING

## MEJORAR LA SALUD Y EL BIENESTAR

Médicos de  
proveedores  
psiquiátricos  
bilingües/trilingües

Bilingual/Trilingual  
Psychiatric  
Providers  
Clinicians

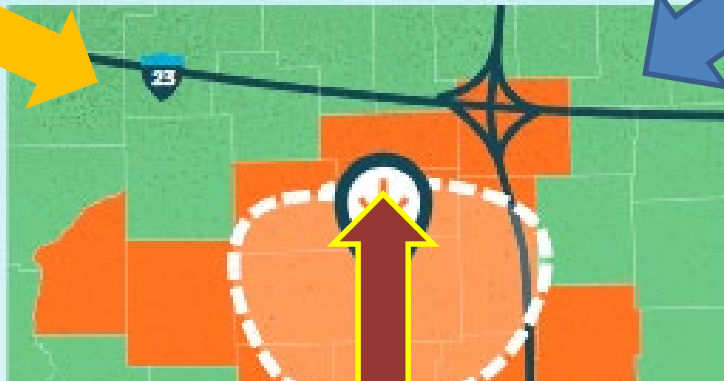
Transitional Behavioral  
Health  
Career Pipeline towards  
mental health careers  
(Worker Employment  
Training)

Transitional Behavioral  
Health Trayectoria  
profesional hacia las carreras  
de salud mental  
(Capacitación laboral de los  
trabajadores)

WHERE

Focus on Areas of Greatest Need

Your zip code can be more important than your  
genetic code. Profound health disparities exist  
depending on where you live.



Prevención Intervención temprana  
Alcance  
Asistencia para navegar por el sistema de salud  
Conexión a las clínicas

Prevention Early Intervention  
Outreach  
Support in navigating Health System  
Connecting to clinics

Number of clinics within  
limits of residential  
areas

Número de clínicas  
dentro de los límites de  
las áreas residenciales

Ventura Avenue  
East Ventura

Logrando Bienestar  
Wellness Center-Centros  
de Bienestar  
RISE  
ACCESS  
Promotor(x)s Groups  
Peers  
MHSA FUNDED  
GROUPS

# IMPROVING HEALTH AND WELL-BEING MEJORAR LA SALUD Y EL BIENESTAR





VENTURA COUNTY

**BEHAVIORAL HEALTH**

A Department of Ventura County Health Care Agency

# DISCUSSION

---